



SERVICE BULLETIN

SB-AG-94

Rev IR: 06/10/2026

TORQUE TUBE/ END PLATE CHAFING

Affected Aircraft Models	Serial Number Range
S2R-510	145, 149, 151, 153, 154, 159DC, 525, 532DC, 534DC
S2R-T660	178DC, 187DC, 188, 192, 194

David E. Yarbrough

David Yarbrough
Director of Engineering

LOG OF REVISIONS

NOTE: Reformatting and correction of typographical errors is not considered revision.

REV	PAGE	DESCRIPTION OF REVISION	BY:
IR	All	Initial Release	T. Surratt 06/10/2026

TABLE OF CONTENTS

1. PURPOSE/REASON FOR PUBLICATION	4
2. SCOPE/COMPLIANCE.....	4
3. BY WHOM WORK WILL BE ACCOMPLISHED.....	4
4. APPROVAL	4
5. MAN HOURS	4
6. SPECIAL TOOLS	4
7. PARTS LIST	4
8. INSTRUCTIONS	5
9. COMPLIANCE.....	7

1. PURPOSE/REASON FOR PUBLICATION

This Service Bulletin was issued after Production identified inadequate clearance between the flap torque tube and the right-hand side end plate. Contact between the tube and end plate is causing chafing on both parts.

2. SCOPE/COMPLIANCE

This Service Bulletin outlines the procedure for inspecting the flap torque tube and mounting plate for chafing or other damage, and the corrective action required if damage is found.

3. BY WHOM WORK WILL BE ACCOMPLISHED

The work is to be accomplished by an FAA Certified A&P Mechanic or foreign equivalent.

4. APPROVAL

This Service Bulletin is approved by the Director of Engineering at Thrush Aircraft, LLC.

5. MAN HOURS

Approximately 15 minutes

6. SPECIAL TOOLS

N/A

7. PARTS LIST

PART NUMBER	NOMENCLATURE	KITS & QUANTITIES	
		(A)	(B)
10678T001	END PLATE FLAP SHAFT (510)	1	/
95657T901	END PLATE FLAP SHAFT (710)	/	1

8. INSTRUCTIONS

1. Remove and set aside R/H forward upper wing fairing to gain access to flap torque tube and end plate. (Reference Figure 1)



Figure 1

2. Locate flap torque tube and end plate. (Reference Figure 2)

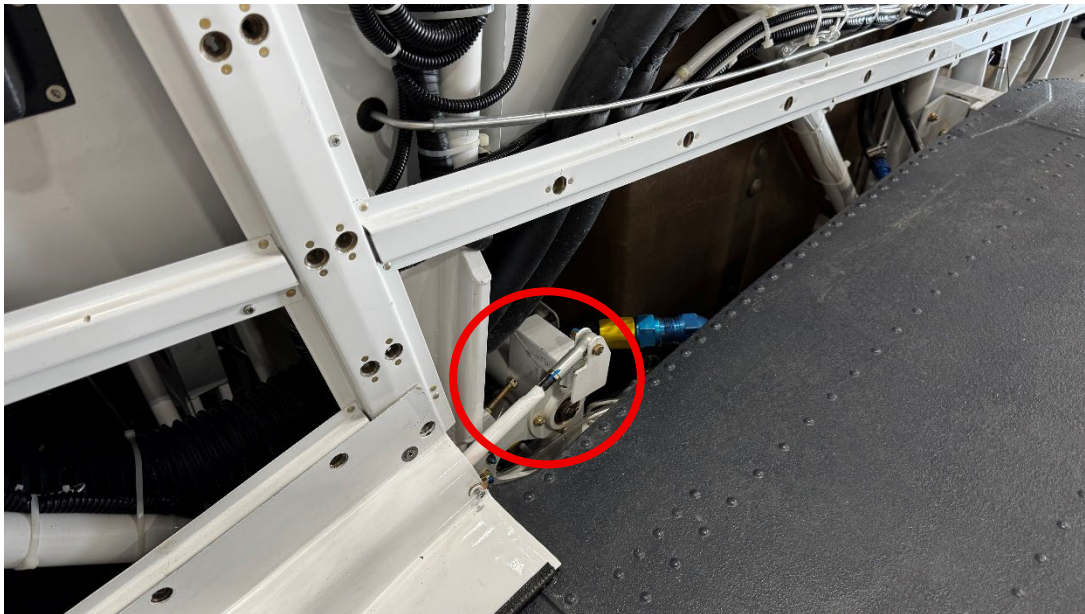


Figure 2

3. Visually inspect for chafing between torque tube and end plate. (Reference Figures 3 & 4)

NOTE: Evidence of chafing may be discovered by either metal shavings in belly skin below end plate or scratches revealing shiny metal on end plate.

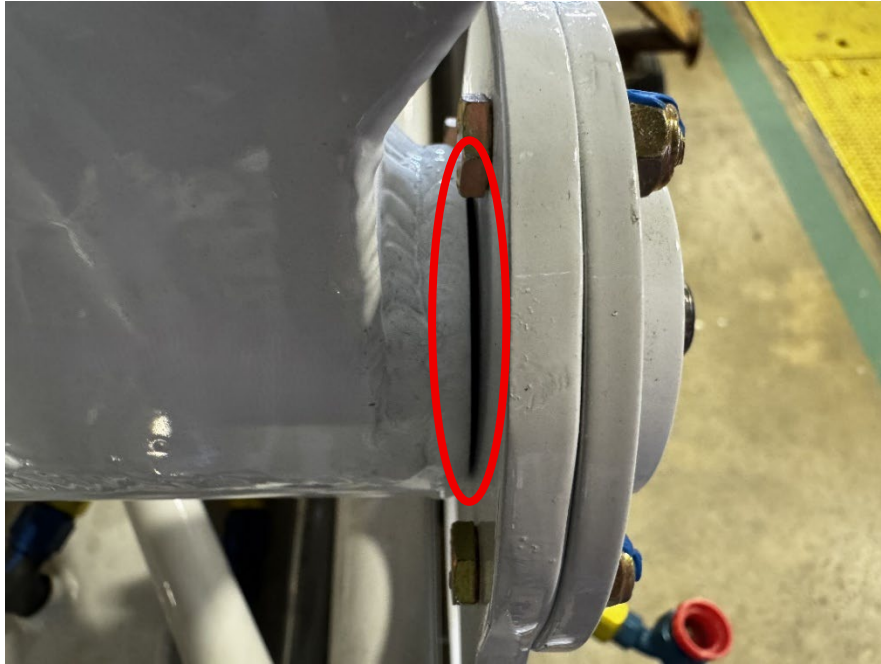


Figure 3



Figure 4

4. If visible chafing present, report to support@thrushaircraft.com.



9. COMPLIANCE

Service Bulletin SB-AG-94 Rev. IR Compliance Report

Aircraft S/N:	Aircraft Owner:
Aircraft Registration #:	Address of Owner:
Airframe total time:	City & State:
Engine total time:	Physical location:
Complied with by:	Date of Compliance:
Signature:	Certificate #:

PLEASE RETURN THIS REPORT ONLY AFTER INSPECTION AND MODIFICATION IS MADE

This response card may be mailed, faxed to (229) 317-8225, or emailed to:
support@thrushaircraft.com

Fold, Tape & Mail (Do Not Staple)

Return Address:

**Thrush Aircraft, LLC
Attn: Customer Support Team
300 Old Pretoria Road
Albany, GA 31721**